



MONTHLY MEMBERSHIP PROGRESS REPORT

District 13 OH3

Results as of: 05/31/2018

GMT: CINDY GREGG

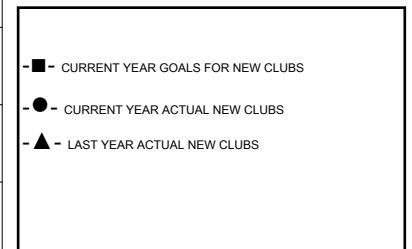
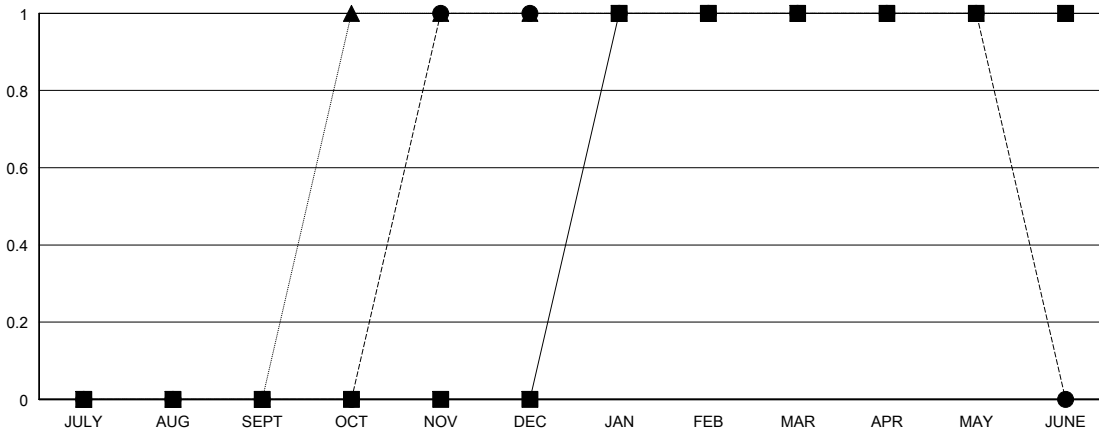
LOCATION OHIO

GMT CA

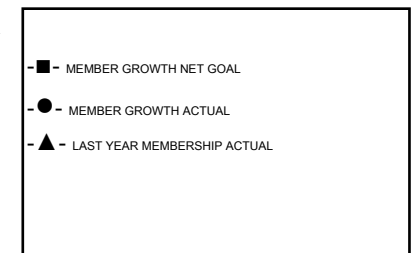
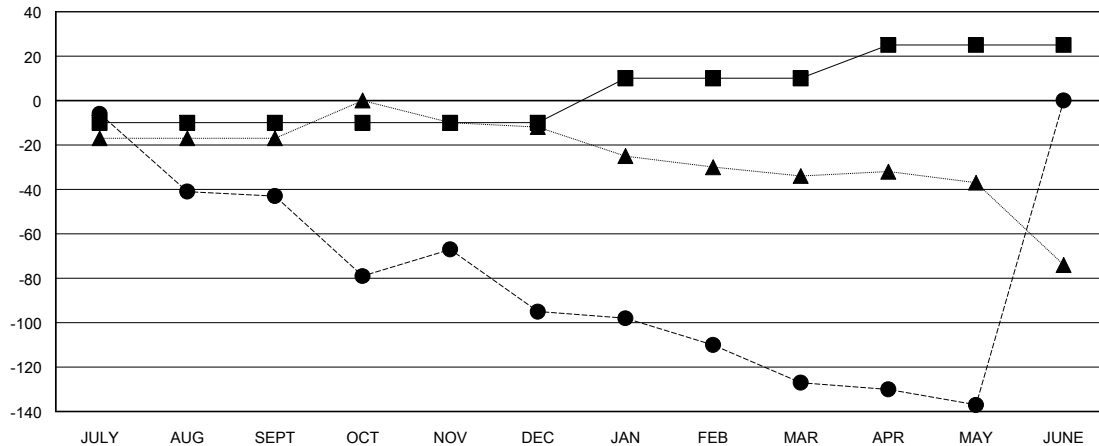
Clubs			
RESULTS FOR 2017-2018			
QUARTER	NEW CLUB GOAL	NEW CLUBS	DROPPED CLUBS
JULY/AUG/SEPT	0	0	0
OCT/NOV/DEC	0	1	4
JAN/FEB/MAR	1	0	0
APR/MAY/JUNE	0	0	0

Members			
RESULTS FOR 2017-2018			
QUARTER	MEMBER GROWTH NET GOAL	MEMBER GROWTH ACTUAL	DROPPED MEMBERS ACTUAL (including transfers)
JULY/AUG/SEPT	-10	25	60
OCT/NOV/DEC	0	67	102
JAN/FEB/MAR	20	20	51
APR/MAY/JUNE	15	27	34

GOALS AND ACTUAL NEW CLUBS CUMULATIVE



GOALS AND ACTUAL MEMBERS CUMULATIVE



DROPPED CLUBS: 4	32 CLUBS OF 62 ADDED 1 OR MORE NEW MEMBERS	<u>GENDER DISTRIBUTION</u> MALE 1,066 (68.46%) FEMALE 491 (31.54%) Women Percentage Fiscal Year Goal: 32%
<u>DROPPED MEMBERS</u> DECEASED 23 CLUB CANCELLED 38 OTHER 186 TOTAL 247	CLICK HERE FOR CUMULATIVE MEMBERSHIP DATA	TOTAL FAMILY UNIT MEMBERS 309 FAMILY MEMBERS PAYING HALF DUES 160